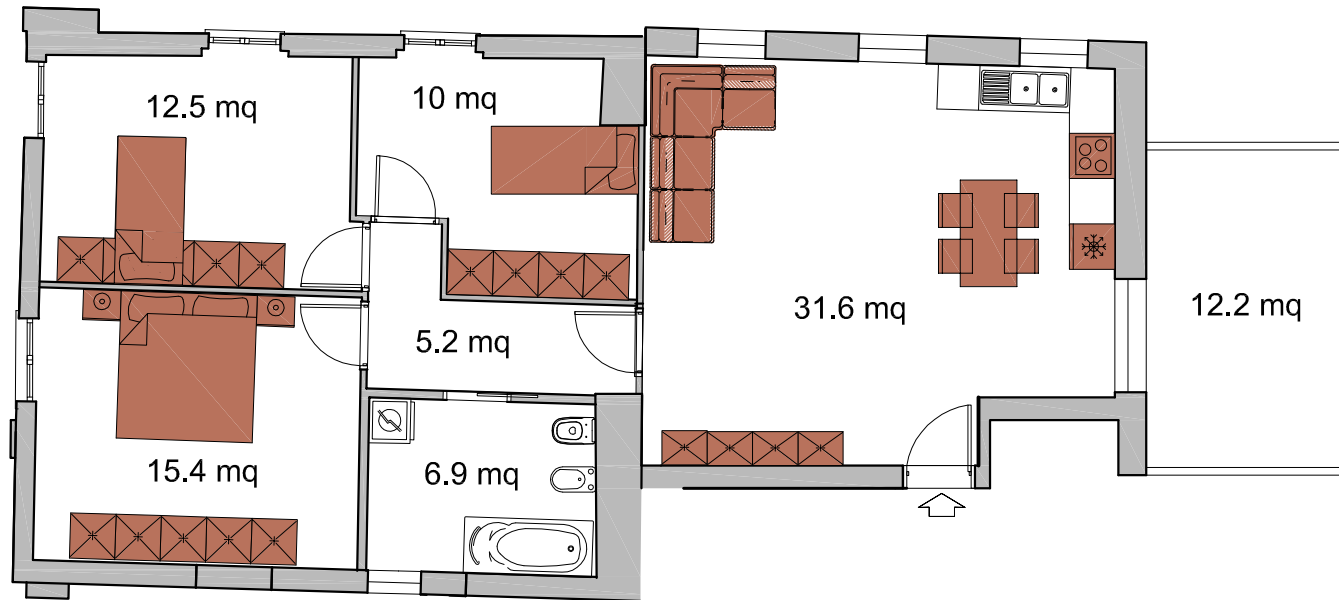


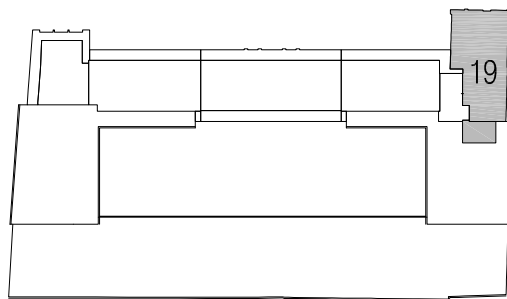
Comun Nuovo (BG) Stallo Lungo (comm.790)

Piano secondo (scala 1:100)

UNITA' 19



Planimetria individuazione (fuori scala)



| Tabella superfici | mq netti (utili, calpestabili) | mq lordi (compreso muri perimetrali, interni e 50% confinanti) | mq comm. (lordi in %) |
|-------------------|-----------------------------------|--|--------------------------|
| Unità | 81.60 | 96.70 | (110%) 106,37 |
| Terrazzo | | 12.20 | (40%) 4.88 |
| Totale | | | 111.25 |